

CMI08 Vandalproof Pushbutton

12mm

Ø 14mm

19mm

IP67

LED

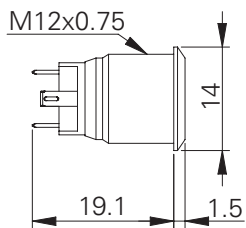


Specification

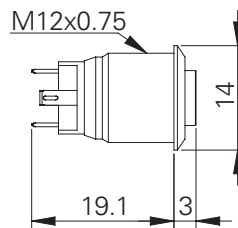
Termination	Solder terminals (2.0 x 0.5mm)
Switching function	Momentary
Configuration of poles	Single
Maximum load	2A, 36VDC
LED voltage	See ordering information
Contact resistance	< 50 mΩ
Insulation resistance	> 1000 MΩ
Operating temperature	-25°C to +55°C
Ingress protection	IP67 (EN 60529)
Duty cycle	200,000 (min)
Operating force	2.5N
Nut mounting torque	2.5Nm
Panel thickness	1.0mm to 7.0mm
Body & button material	See ordering information
Contact material	Silver plated brass

Product Dimensions

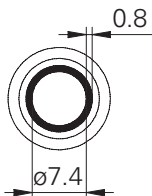
Flat



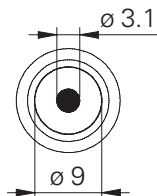
Raised



Front view (ring)



Front view (dot)

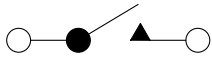


All dimensions in mm

Engelking

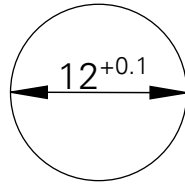
CMI08 Vandalproof Pushbutton

Circuit Diagram

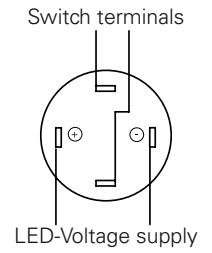


Form A

Mounting Dimensions



Wiring Instructions



All dimensions in mm

Ordering information

Material	Button	LED	LED-Colour	LED-Voltage ¹
V2: Stainless steel	F: Flat	R: Ring	GN: Green	00: No resistor ²
AS: Aluminium black	R: Raised	D: Dot	RD: Red	06: 6 Volt
BN: Brass nickel plated			YL: Yellow	12: 12 Volt
			BL: Blue	24: 24 Volt
			WH: White	
			GR: Green/Red ¹	
			BR: Blue/Red ¹	
			GB: Green/Blue ¹	

CMI08/ [] / [] / [] / [] / M/S/20

¹ Dual-colour LEDs are only available without resistor.

² Green, Yellow: 1.8V Red, Blue, White: 2.8V @20mA



Engelking Elektronik GmbH

Albstr. 16 · D-78609 Tuningen · Germany
 Tel. +49 (0)7464-9865-0 · Fax +49 (0)7464-9865-71
 info@engelking.de · www.engelking.de