

CM31 19mm Vandalproof Pushbutton



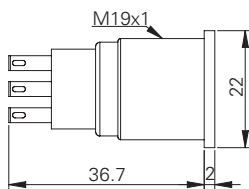
Specification

Termination	2.8×0.5mm fast connect terminals
Switching function	Momentary or maintained
Configuration of poles	Single or double
Maximum load	50A, 48VAC
LED voltage	-
Contact resistance	< 50mΩ
Insulation resistance	> 1000MΩ
Operating temperature	-20°C to +55°C
Ingress protection	IP67 (EN60529)
Duty cycle	50,000 (min)
Operating force	3N
Nut mounting torque	~ 0.8Nm
Panel thickness	1.0mm to 10.0mm
Body & button material	See ordering information
Contact material	Silver Alloy

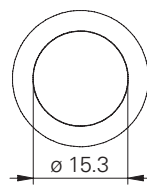
Product Dimensions

All dimensions in mm

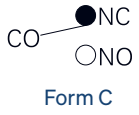
Side View



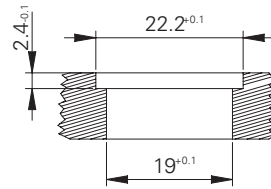
Front View



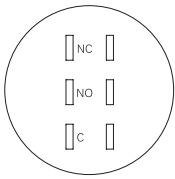
Circuit Diagram



Mounting Dimensions



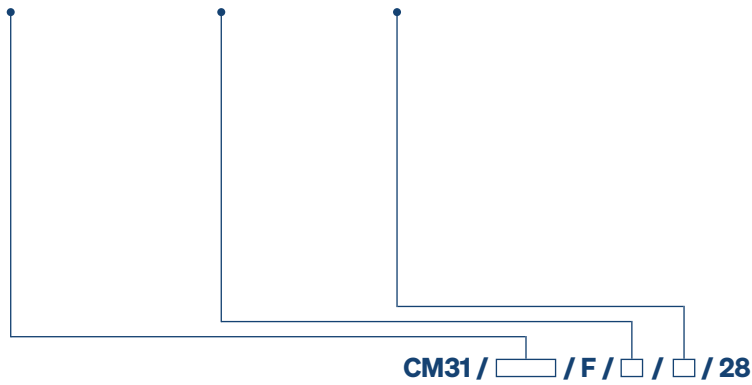
Contact Arrangement



Ordering Information



Material	Switch Function	Poles
V2: Stainless steel ¹	M: Momentary	S: Single
AS: Black aluminium	L: Maintained	D: Double



¹ 14301