



# CM31 19mm Vandalproof Pushbutton



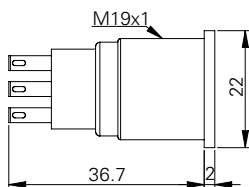
## Specification

Termination	2.8×0.5mm fast connect terminals
Switching function	Momentary or maintained
Configuration of poles	Single or double
Maximum load	50A, 48VAC
LED voltage	-
Contact resistance	< 50mΩ
Insulation resistance	> 1000MΩ
Operating temperature	-25°C to +55°C
Ingress protection	IP67 (EN60529)
Duty cycle	50,000 (min)
Operating force	3 ~ 5N
Nut mounting torque	~ 0.8Nm
Panel thickness	1.0mm to 10.0mm
Body & button material	See ordering information
Contact material	Silver Alloy

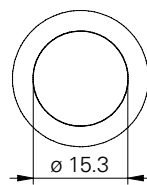
## Product Dimensions

All dimensions in mm

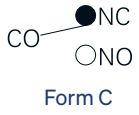
### Side View



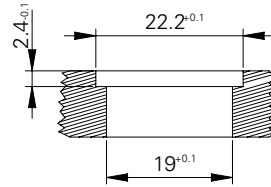
### Front View



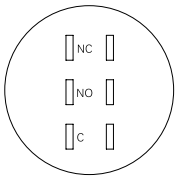
### Circuit Diagram



### Mounting Dimensions



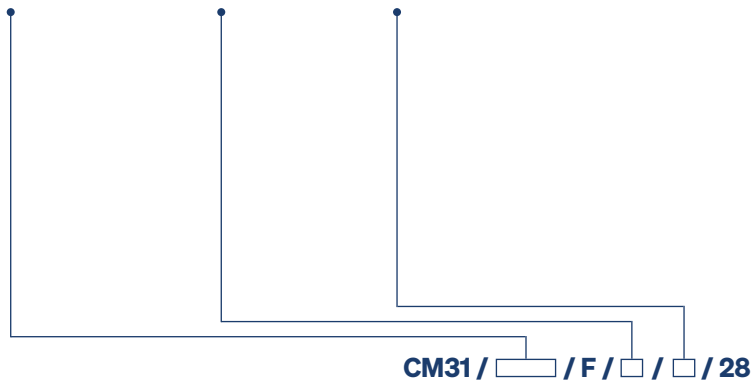
### Contact Arrangement



### Ordering Information



Material	Switch Function	Poles
V2: Stainless steel <sup>1</sup>	M: Momentary	S: Single
AS: Black aluminium	L: Maintained	D: Double



<sup>1</sup> 14301