



CKI35 22mm Illuminated Capacitive Switch

22mm	25mm	32mm	IP68	LED	
			IP69K		

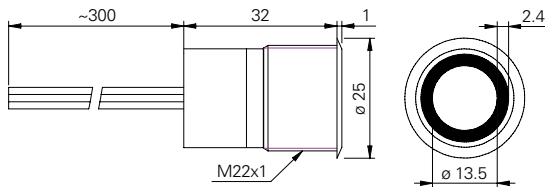
Specification

Termination	30cm flying leads
Switching function	Momentary or maintained
Configuration of poles	Single
Maximum load	500mA, 24VDC
LED voltage	See ordering information
Contact resistance	200mΩ
Insulation resistance	600VDC 10MΩ
Operating temperature	-25°C to +55°C
Ingress protection	IP67 (EN 60529), IP69K (DIN 4050)
Duty cycle	50,000,000 (min)
Operating force	ON
Nut mounting torque	~ 0.8Nm
Panel thickness	0.5mm to 8.0mm
Body & button material	Stainless steel 1.4301
Can be triggered by water	

Product Dimensions

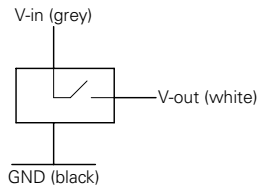
All dimensions in mm

Flat

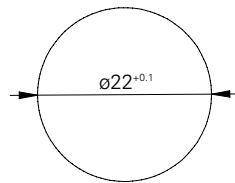


Circuit Diagram

Common plus (PMOS)



Mounting Dimensions



Wiring Instructions

Switch: See circuit diagram

█ LED wire +²

█ LED wire -²

For versions with 3 & 4 LED wires there is one wire per colour (+) and a black wire as common cathode^{4,5}

Ordering Information



LED Colour

GN: Green	WB: White/blue ³
RD: Red	NB: Off/blue
YL: Yellow	NG: Off/green
BL: Blue	NR: Off/red
WH: White	NW: Off/white
BG: Blue/green ³	NY: Off/yellow
BR: Blue/red ³	O1: Green/red ⁴
BW: Blue/white ³	O2: Green/blue ⁴
RG: Red/green ³	O3: Blue/red ⁴
RB: Red/blue ³	O4: Blue/white ⁴
GB: Green/blue ³	11: RGB ⁵
GR: Green/red ³	

LED Voltage

00: No resistor ¹
05: 5 volt
12: 12 volt
24: 24 volt

Switch Function

M: Momentary
L: Maintained
1: Momentary switched LED ³
2: Maintained switched LED ³

CKI35 / V2 / F / R / / / / S / L3

¹ Green, yellow: 1.8V | Red, blue, white: 2.8V (20mA)

² LED wires are only present by unswitched LED versions

³ First colour is active when the switch is not pressed.

Second colour is active when switch is pressed.

⁴ 3 wires for LED connection (one per colour and common cathode (common anode available on request))

⁵ Red/green/blue, 4 wires for LED connection (one per colour and common cathode (common anode available on request))