

CM26 19mm Vandalproof Pushbutton

19mm	22mm	33.5mm	39.5mm	IP65
		35mm	41mm	IP67

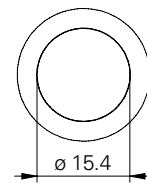
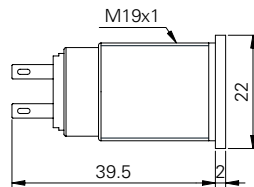
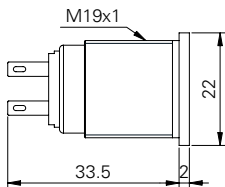
Specification

Termination	Screw or 2.8×0.5mm fast connect terminals
Switching function	Momentary or maintained
Configuration of poles	Single
Maximum load	5A, 48VAC
LED voltage	-
Contact resistance	< 50mΩ
Insulation resistance	> 100MΩ
Operating temperature	-25°C to +55°C
Ingress protection	IP67 (EN 60529) maintained: IP65
Duty cycle	50,000 (min)
Operating force	4N
Nut mounting torque	~ 0.8Nm
Panel thickness	1.0mm to 10.0mm
Body & button material	See ordering information
Contact material	Silver Alloy

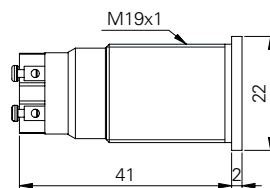
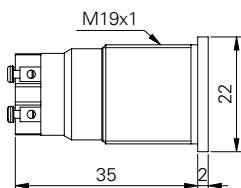
Product Dimensions

All dimensions in mm

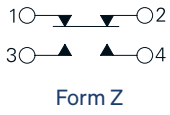
2.8mm Terminals Momentary 2.8mm Terminals Maintained Front View



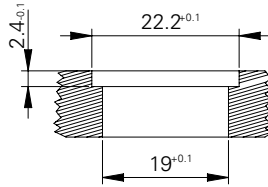
Screw Terminals Momentary Screw Terminals Maintained



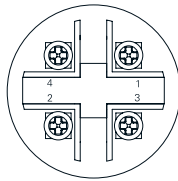
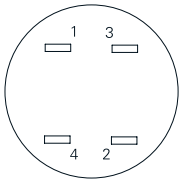
Circuit Diagram



Mounting Dimensions



Contact Arrangement



Ordering Information



Material

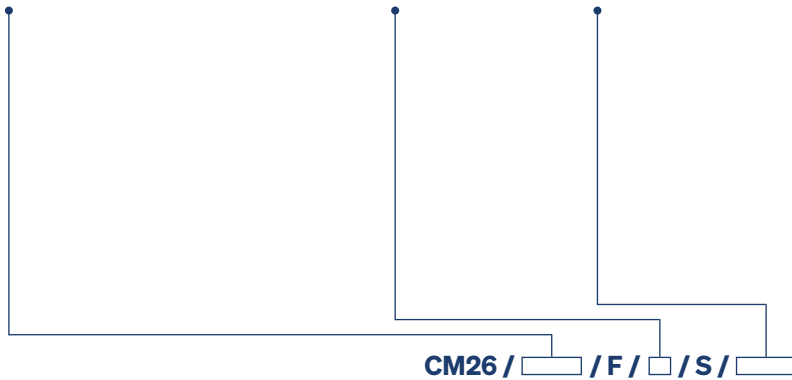
V2: Stainless steel¹
AS: Black aluminium

Switch Function

M: Momentary
L: Maintained²

Termination

28: 2.8mm tabs
ST: Screws



¹ 1.4301

² IP65 (EN60529)

Non rotating button available on request