



CM115 16mm Vandalproof Pushbutton

16mm	18mm	36.6mm	IP65	LED	
		36.8mm			

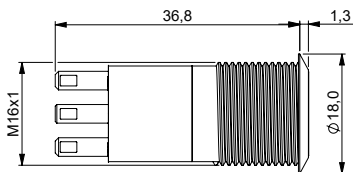
Specification

Termination	2.8×0.5mm solder terminals
Switching function	Momentary or maintained
Configuration of poles	Single or double
Maximum load	3A, 48VAC
LED voltage	See ordering information
Contact resistance	< 50mΩ
Insulation resistance	> 1000MΩ
Operating temperature	-25°C to +55°C
Ingress protection	IP65 (EN 60529)
Duty cycle	50,000 (min)
Operating force	1.5 ~ 2N
Nut mounting torque	~ 0.6Nm
Panel thickness	1.0mm to 8.0mm
Body & button material	See ordering information
Contact material	Silver Alloy

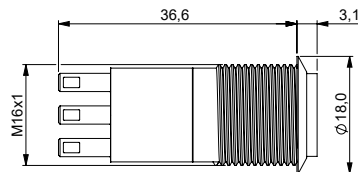
Product Dimensions

All dimensions in mm

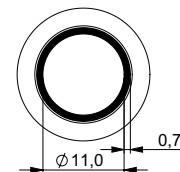
Flat



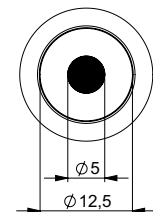
Raised



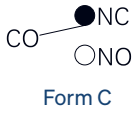
Front View (ring)



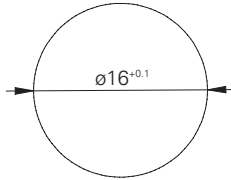
Front View (dot)



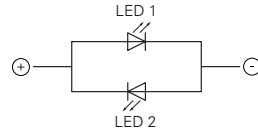
Circuit Diagram



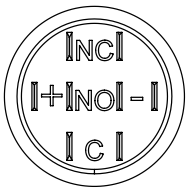
Mounting Dimensions



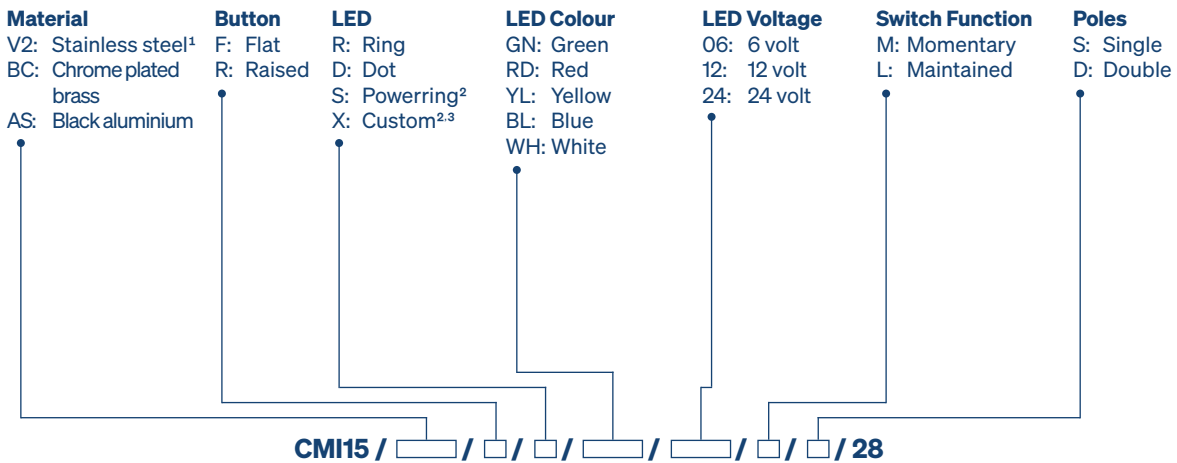
LED Circuit Diagram



Contact Arrangement



Ordering Information



¹ 14301
² Only available with flat button
³ IP65 (EN60529)