



CKI36 22mm Illuminated Capacitive Switch

 22mm	 25mm	 32mm	IP68	LED	
			IP69K		

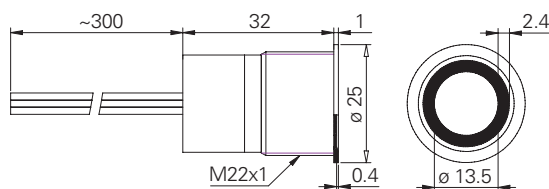
Specification

Termination	30cm flying leads
Switching function	Momentary or maintained
Configuration of poles	Single
Maximum load	500mA, 24VDC
LED voltage	See ordering information
Contact resistance	200mΩ
Insulation resistance	600VDC 10MΩ
Operating temperature	-40°C to +85°C
Ingress protection	IP68 (EN 60529), IP69K (DIN 4050)
Duty cycle	50,000,000 (min)
Operating force	ON
Nut mounting torque	~ 0.8Nm
Panel thickness	0.5mm to 8.0mm
Body & button material	Stainless steel 1.4301
Can be triggered by water	

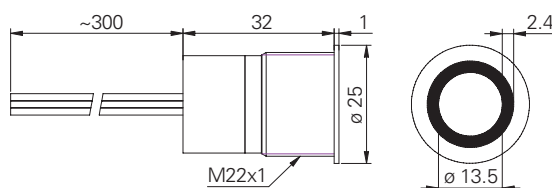
Product Dimensions

All dimensions in mm

Finger Guided

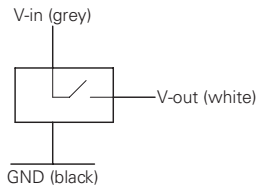


Flat

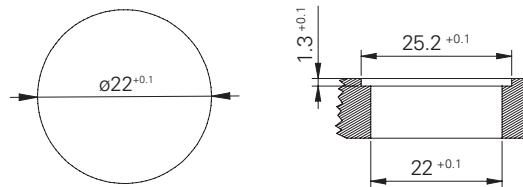


Circuit Diagram

Common plus (PMOS)



Mounting Dimensions



Wiring Instructions

Switch: See circuit diagram

— LED wire +²

— LED wire -²

For versions with 3 & 4 LED wires there is one wire per colour (+) and a black wire as common cathode^{4,5}

Ordering Information



Head Style

F: Flat
G: Finger guided

LED Colour

GN: Green
RD: Red
YL: Yellow
BL: Blue
WH: White
BG: Blue/green³
BR: Blue/red³
BW: Blue/white³
RG: Red/green³
RB: Red/blue³
GB: Green/blue³
GR: Green/red³
WB: White/blue³
NB: Off/blue
NG: Off/green
NR: Off/red
NW: Off/white
NY: Off/yellow
O1: Green/red⁴
O2: Green/blue⁴
O3: Blue/red⁴
O4: Blue/white⁴
11: RGB⁵

LED Voltage

00: No resistor¹
05: 5 volt
12: 12 volt
24: 24 volt

Switch Function

M: Momentary
L: Maintained
1: Momentary switched LED³
2: Maintained switched LED³

CKI36 / V2 / / R / / / / S / L3

¹ Green, yellow: 1.8V | Red, blue, white: 2.8V (20mA)

² LED wires are only present by unswitched LED versions

³ First colour is active when the switch is not pressed.

Second colour is active when switch is pressed.

⁴ 3 wires for LED connection (one per colour and common cathode (common anode available on request))

⁵ Red/green/blue, 4 wires for LED connection (one per colour and common cathode (common anode available on request))