

CM20 Vandalproof Pushbutton

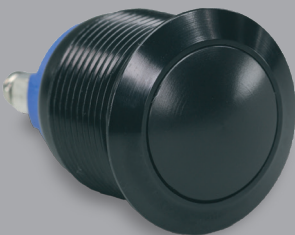
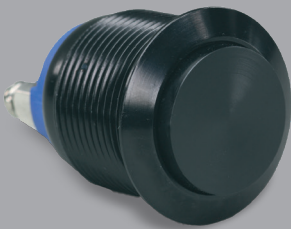
19mm

Ø 22mm

24mm

IP65

25.3mm

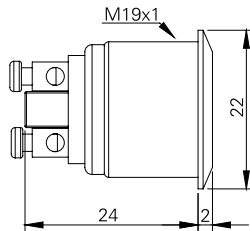


Specification

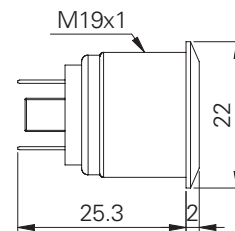
Termination	Screw or 2.8x0.5 fast connect terminals
Switching function	Momentary
Configuration of poles	Single
Maximum load	2A, 36VAC
Contact resistance	< 50 mΩ
Insulation resistance	> 1000 MΩ
Operating temperature	-20°C to +55°C
Ingress protection	IP65 (EN 60529)
Duty cycle	200,000 (min)
Operating force	4N
Nut mounting torque	~ 0.8Nm
Panel thickness	1.0 to 10.0mm
Body & button material	See ordering information
Contact material	Silver plated brass

Product Dimensions

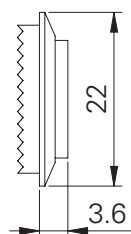
Screw terminals Flat



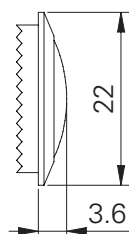
2.8mm terminals Flat



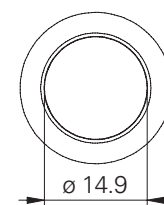
Raised



Domed



Front view (all versions)



Engelking

All dimensions in mm

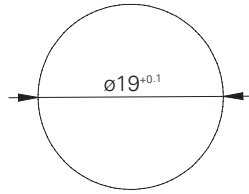
CM20 Vandalproof Pushbutton

Circuit Diagram



Form A

Mounting Dimensions



All dimensions in mm

Ordering information

Material

V2: Stainless steel¹

AS: Aluminium black

BN: Brass nickel plated

GB: Brass golden finish

Button

F: Flat

R: Raised

D: Domed

Terminations

28: 2.8mm tabs

ST: Screws

CM20/ [] / [] / M / S / []

¹ 1.4301

Engelking Elektronik GmbH

Albstr. 16 · D-78609 Tuningen · Germany
Tel. +49 (0)7464-9865-0 · Fax +49 (0)7464-9865-71
info@engelking.de · www.engelking.de