

# CM20 19mm Vandalproof Pushbutton

19mm	22mm	24mm	IP65
		25.3mm	

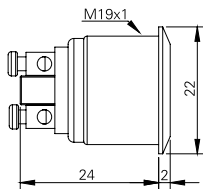
## Specification

Termination	Screw or 2.8×0.5mm fast connect terminals
Switching function	Momentary
Configuration of poles	Single
Maximum load	2A, 36VDC
LED voltage	-
Contact resistance	< 50mΩ
Insulation resistance	> 100MΩ
Operating temperature	-25°C to +55°C
Ingress protection	IP65 (EN 60529)
Duty cycle	50,000 (min)
Operating force	4N
Nut mounting torque	~ 0.6Nm
Panel thickness	1.0mm to 10.0mm
Body & button material	See ordering information
Contact material	Silver plated brass

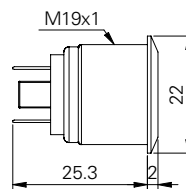
## Product Dimensions

All dimensions in mm

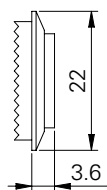
### Screw Terminals Flat



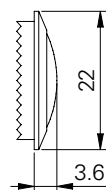
### 2.8mm Terminals Flat



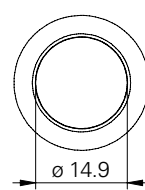
### Raised



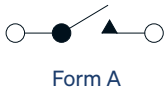
### Domed



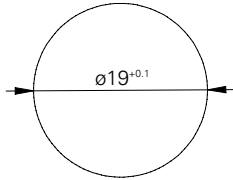
### Front View (all versions)



### Circuit Diagram



### Mounting Dimensions



### Ordering Information



#### Material

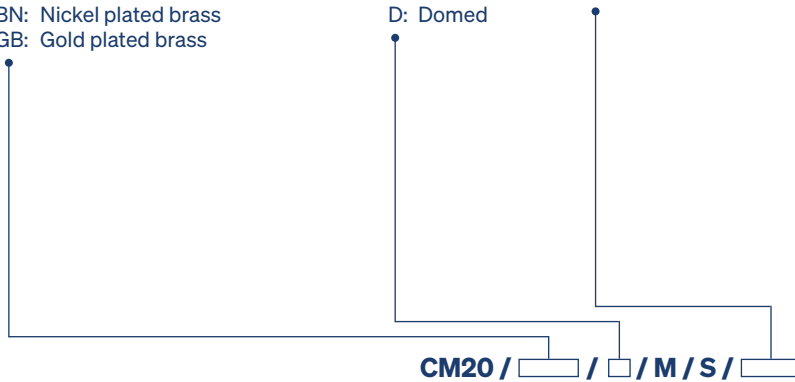
V2: Stainless steel<sup>1</sup>  
AS: Black aluminium  
BN: Nickel plated brass  
GB: Gold plated brass

#### Button

F: Flat  
R: Raised  
D: Domed

#### Terminations

28: 2.8mm solder  
ST: Screws



<sup>1</sup> 14301