



EPI16 22mm Illuminated Piezo Switch

22mm	26mm	10.5mm	IP68	LED	
	28mm	14mm			

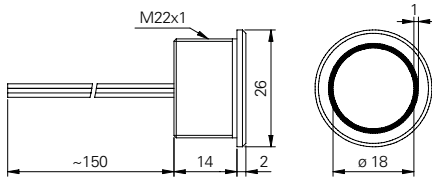
Specification

Termination	15cm flying leads
Switching function	Momentary
Configuration of poles	Single
Maximum load	100mA, 35VDC
LED voltage	See ordering information
Contact resistance	100mΩ
Insulation resistance	> 10 ⁹ Ω
Operating temperature	-40°C to +50°C
Ingress protection	IP68 (EN 60529)
Duty cycle	1,000,000 (min)
Operating force	< 5N
Nut mounting torque	~ 2.5Nm
Panel thickness	0.5mm to 13.0mm
Body & button material	See ordering information
ESD resistance	15kV to front of switch

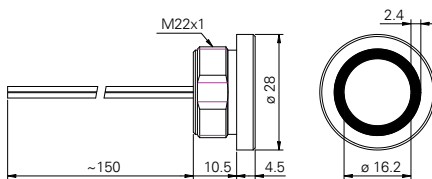
Product Dimensions

All dimensions in mm

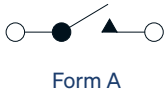
Flat



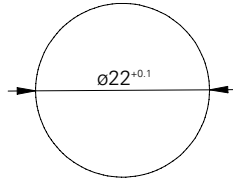
Raised







Circuit Diagram



Mounting Dimensions



Wiring Instructions

-  Switch wire
-  Switch wire
-  Ground wire for LED
-  LED colour wire for +LED

Ordering Information



Material

AN: Natural anodised aluminium
 AR: Red anodised aluminium
 AB: Blue anodised aluminium
 AY: Yellow anodised aluminium
 AG: Green anodised aluminium
 AS: Black aluminium
 V2: Stainless steel¹
 V4: Stainless steel²
 V5: Stainless steel³

Head Style

F: Flat
 R: Raised

LED Colour

GN: Green
 RD: Red
 YL: Yellow
 BL: Blue
 WH: White
 GR: Green/red³
 BR: Blue/red³
 GB: Green/blue³
 BW: Blue/white
 10: RGB^{4,6}

LED Voltage

R1: 5-12 volt⁵
 R3: 12-24 volt⁶

EPI16 / / / R / / / M / S / L1

¹ 1.4305

² 1.4404

³ 1.4462

⁴ Only available with 12-24 volt (R3)

⁵ Only available with flat head

⁶ Only available with raised head