



CMI25 19mm Vandalproof Pushbutton

19mm	22mm	34.5mm	40.5mm	IP65	LED
		35mm	41mm	IP67	

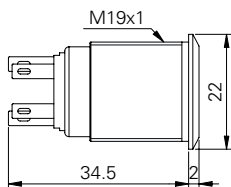
Specification

Termination	Screw or 2.8×0.5mm fast connect terminals
Switching function	Momentary or maintained
Configuration of poles	Single
Maximum load	5A, 48VAC
LED voltage	See ordering information
Contact resistance	< 50mΩ
Insulation resistance	> 100MΩ
Operating temperature	-25°C to +55°C
Ingress protection	IP67 (EN 60529) maintained: IP65
Duty cycle	50,000 (min)
Operating force	4N
Nut mounting torque	~ 0.8Nm
Panel thickness	1.0mm to 10.0mm
Body & button material	See ordering information
Contact material	Silver Alloy

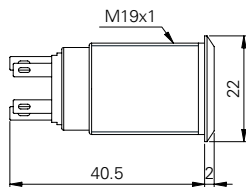
Product Dimensions

All dimensions in mm

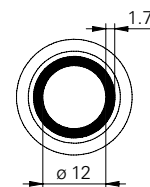
2.8mm Terminals Momentary



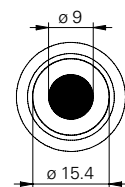
2.8mm Terminals Maintained



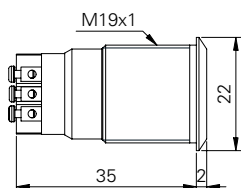
Front View (ring)



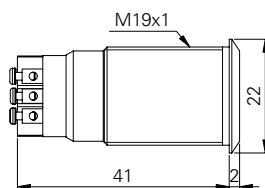
Front View (dot)



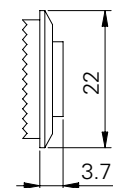
Screw Terminals Momentary



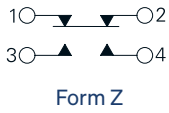
Screw Terminals Maintained



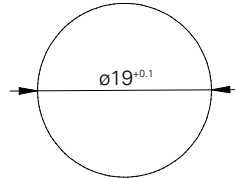
Raised



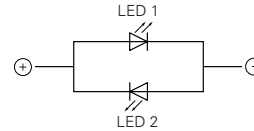
Circuit Diagram



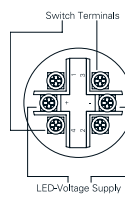
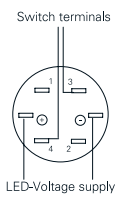
Mounting Dimensions



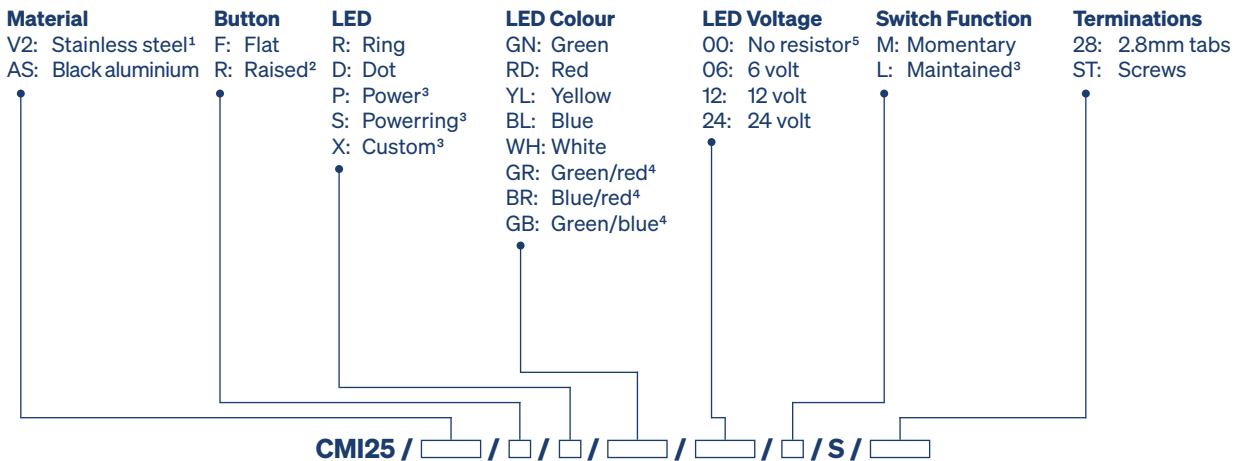
LED Circuit Diagram



Wiring Instructions



Ordering Information



¹ 14301
² Only available with ring illumination
³ IP65 (EN60529)
⁴ 2 pins, colour change by swapping polarity
⁵ Red, yellow: 1.8V | Green, blue, white: 2.8V (15mA)

Non rotating button available on request