



CM37 22mm Vandalproof Pushbutton

 22mm  25mm  25.3mm  IP65

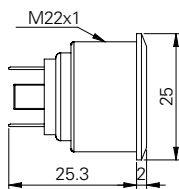
Specification

Termination	2.8×0.5mm fast connect terminals or screw terminals
Switching function	Momentary
Configuration of poles	Single
Maximum load	2A, 36VAC
LED voltage	-
Contact resistance	< 50mΩ
Insulation resistance	> 1000MΩ
Operating temperature	-20°C to +55°C
Ingress protection	IP65 (EN60529)
Duty cycle	200,000 (min)
Operating force	4N
Nut mounting torque	5 ~ 14Nm
Panel thickness	1.0mm to 10.0mm
Body & button material	See ordering information
Contact material	Silver Alloy

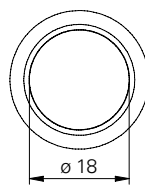
Product Dimensions

All dimensions in mm

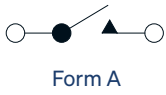
Side View



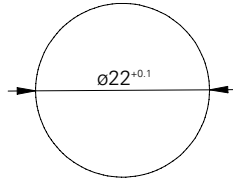
Front View



Circuit Diagram



Mounting Dimensions



Ordering Information



Material

V2: Stainless steel¹
AS: Black aluminium

CM37 / / F / M / S / 28

¹ 14301