



# ESI11 19mm Vandalproof Pushbutton

19mm     $\varnothing$  21,5mm    16.5mm    LED   

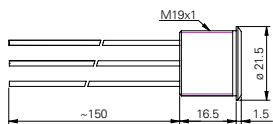
## Specification

Termination	15cm flying leads
Switching function	Momentary
Configuration of poles	Single
Maximum load	50mA, 24VDC
LED voltage	See ordering information
Contact resistance	100m $\Omega$
Insulation resistance	> 100M $\Omega$
Operating temperature	-20°C to +70°C
Ingress protection	-
Duty cycle	50,000 (min)
Operating force	1.8N
Nut mounting torque	~ 2.5Nm
Panel thickness	1.5mm to 13.0mm
Body & button material	See ordering information
Contact material	Gold

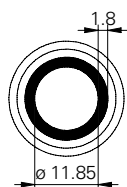
## Product Dimensions

All dimensions in mm

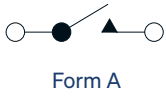
### Flying Leads



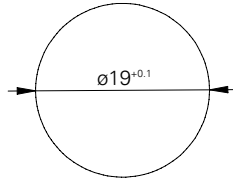
### Front View







## Circuit Diagram



## Mounting Dimensions



## Wiring Instructions

-  Switch wire
-  Switch wire
-  Ground wire for LED
-  LED colour wire for +LED

## Ordering Information



### Material

V2: Stainless steel<sup>1</sup>  
AS: Black aluminium  
AN: Natural aluminium  
PK: Black plastic  
PW: White plastic

### LED Colour

GN: Green  
RD: Red  
BL: Blue  
YL: Yellow  
WH: White  
GB: Green/blue

### LED Voltage

00: No resistor<sup>2</sup>  
05: 5 volt  
12: 12 volt  
24: 24 volt

ES111 /  / F / R /  /  / M / S / L1

<sup>1</sup> 14301

<sup>2</sup> Green, blue, white: 3.2VDC | Red, orange: 2.5VDC (20mA)