



EPO6 19mm Piezo Switch

19mm	21.5mm	10mm	IP68	
			IP69K	

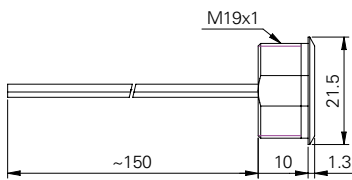
Specification

Termination	15cm flying leads
Switching function	Momentary
Configuration of poles	Single
Maximum load	100mA, 35VDC
LED voltage	-
"On" resistance	100mΩ
Insulation resistance	> 10 ⁹ Ω
Operating temperature	-40°C to +85°C
Ingress protection	IP66, IP68 (EN 60529); IP69K (DIN 4050)
Duty cycle	1,000,000 (min)
Operating force	< 3N
Nut mounting torque	~ 2.5Nm
Panel thickness	0.5mm to 8.0mm
Body & button material	See ordering information
Impulse time	-

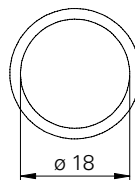
Product Dimensions

All dimensions in mm

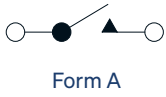
Side View



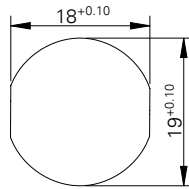
Front View



Circuit Diagram



Mounting Dimensions



Ordering Information



Material

V2: Stainless steel¹
BC: Chrome plated brass

EP06 / / F / M / S / L1

¹ 14307