



CM41 25mm Vandalproof Pushbutton

25mm	28mm	38.5mm	IP65
		40.8mm	IP67

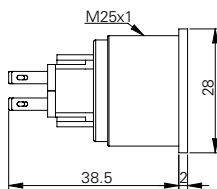
Specification

Termination	2.8×0.5mm fast connect terminals
Switching function	Momentary or maintained
Configuration of poles	Single or double
Maximum load	5A, 48VAC
LED voltage	-
Contact resistance	< 50mΩ
Insulation resistance	> 100MΩ
Operating temperature	-25°C to +55°C
Ingress protection	IP67 (EN 60529) maintained: IP65
Duty cycle	50,000 (min)
Operating force	Single pole: 4N, double pole: 7.5N
Nut mounting torque	~ 0.6Nm
Panel thickness	1.0mm to 10.0mm
Body & button material	See ordering information
Contact material	Gold plated

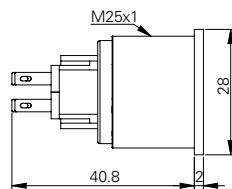
Product Dimensions

All dimensions in mm

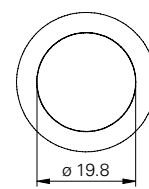
Momentary



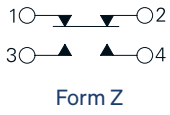
Maintained



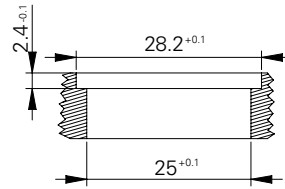
Front View (all versions)



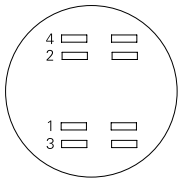
Circuit Diagram



Mounting Dimensions



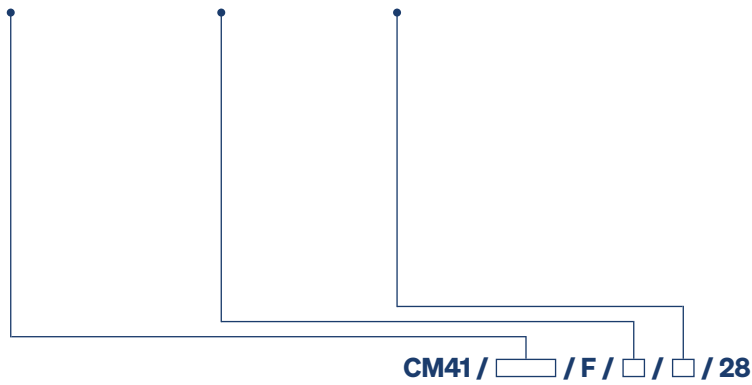
Contact Arrangement



Ordering Information



Material	Switch Function	Poles
V2: Stainless steel ¹	M: Momentary	S: Single
AS: Black aluminium	L: Maintained ²	D: Double



¹ 1.4301

² IP65 (EN60529)

Non rotating button available on request