



# NKI50 30mm Illuminated thiNKswitch™

30mm	33.5mm	17.5mm	IP68	LED	
------	--------	--------	------	-----	--

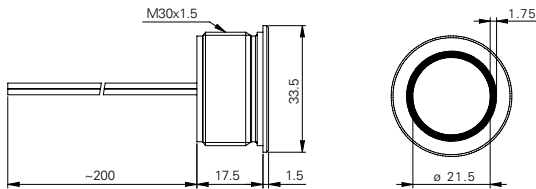
## Specification

Termination	20cm flying leads
Switching function	Momentary or toggle
Configuration of poles	Single
Maximum load	2.5A, 8VDC to 24VDC
LED voltage	24 volt DC
"ON" resistance	100mΩ
Insulation resistance	> 10 <sup>9</sup> Ω
Operating temperature	-40°C to +50°C
Ingress protection	IP68 (EN 60529)
Duty cycle	1,000,000 (min)
Operating force	< 5N
Nut mounting torque	~ 2.5Nm
Panel thickness	0.5mm to 13.0mm
Body & button material	See ordering information
Impulse time	0.5 sec (momentary)

## Product Dimensions

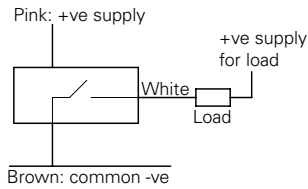
All dimensions in mm

### Flat

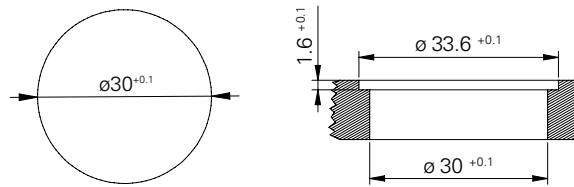


## Circuit Diagram

Common ground (NMOS)

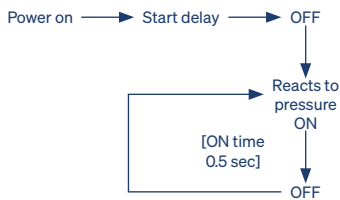


## Mounting Dimensions

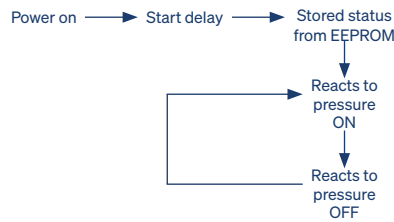


## Timing Diagram

Momentary



Toggle



## Wiring Instructions

- Switch: See circuit diagram
- Ground wire for LED
- LED colour wire for +LED

## Ordering Information



### Material

- AN: Natural anodised aluminium
- AR: Red anodised aluminium
- AB: Blue anodised aluminium
- AY: Yellow anodised aluminium
- AG: Green anodised aluminium
- AS: Black anodised aluminium
- V2: Stainless steel<sup>1</sup>
- V4: Stainless steel<sup>2</sup>

### LED Colour

- GN: Green
- RD: Red
- YL: Yellow
- BL: Blue
- WH: White
- GR: Green/red
- BR: Blue/red
- GB: Green/blue
- BW: Blue/white

### Switch Function

- M: Momentary
- T: Toggle

NKI50 /  / F / R /  / 24 /  / S / L1

<sup>1</sup> 14305

<sup>2</sup> 14404