



CM21 19mm Vandalproof Pushbutton

| | | | |
|------|------|--------|------|
| 19mm | 22mm | 24mm | IP65 |
| | | 25.3mm | |

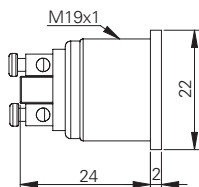
Specification

| | |
|------------------------|---|
| Termination | Screw or 2.8×0.5mm fast connect terminals |
| Switching function | Momentary |
| Configuration of poles | Single |
| Maximum load | 2A, 36VAC |
| LED voltage | - |
| Contact resistance | < 50mΩ |
| Insulation resistance | > 1000MΩ |
| Operating temperature | -20°C to +55°C |
| Ingress protection | IP65 (EN 60529) |
| Duty cycle | 200,000 (min) |
| Operating force | 4N |
| Nut mounting torque | ~ 0.8Nm |
| Panel thickness | 1.0mm to 10.0mm |
| Body & button material | See ordering information |
| Contact material | Silver plated brass |

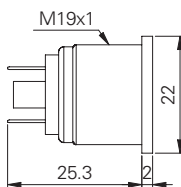
Product Dimensions

All dimensions in mm

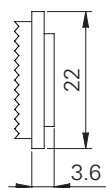
Screw Terminals Flat



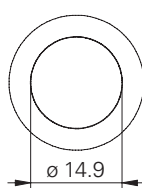
2.8mm Terminals Flat



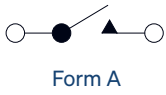
Raised



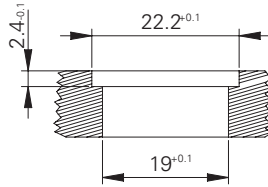
Front View (all versions)



Circuit Diagram



Mounting Dimensions



Ordering Information



Material

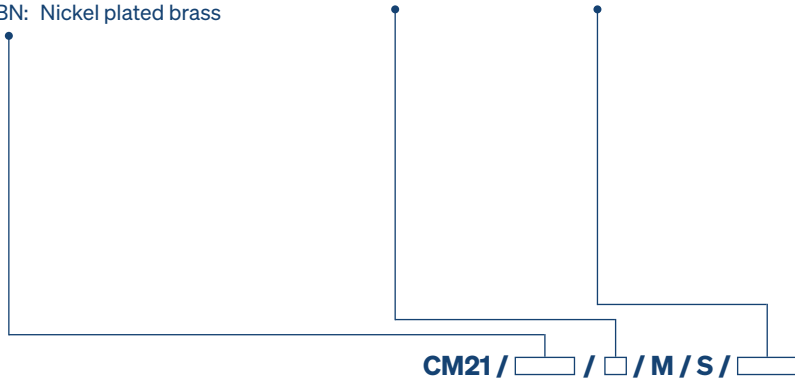
V2: Stainless steel¹
AS: Black aluminium
BN: Nickel plated brass

Button

F: Flat
R: Raised

Terminations

28: 2.8mm solder
ST: Screws



¹ 14301