



EP15 22mm Piezo Switch

22mm	\varnothing 26mm	\updownarrow 17.8mm	IP68	
	\varnothing 25mm	\updownarrow 19.7mm	IP69K	

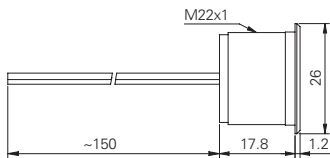
Specification

Termination	15cm flying leads
Switching function	Momentary
Configuration of poles	Single
Maximum load	100mA, 35VDC
LED voltage	-
"On" resistance	100m Ω
Insulation resistance	> 10 ⁹ Ω
Operating temperature	-40°C to +85°C
Ingress protection	IP66, IP68 (EN 60529); IP69K (DIN 4050)
Duty cycle	1,000,000 (min)
Operating force	< 3N
Nut mounting torque	~ 2.5Nm
Panel thickness	0.5mm to 13.0mm
Body & button material	See ordering information
Impulse time	-

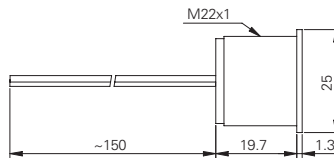
Product Dimensions

All dimensions in mm

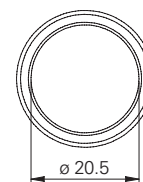
Finger Guided



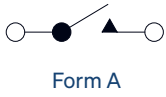
Flat



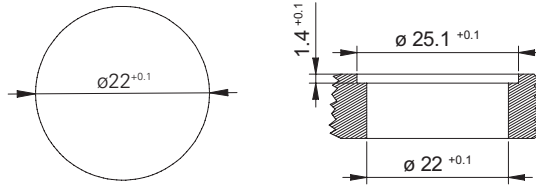
Front View (guided)



Circuit Diagram



Mounting Dimensions



Ordering Information



Material

- AN: Natural anodised aluminium
- AR: Red anodised aluminium
- AB: Blue anodised aluminium
- AY: Yellow anodised aluminium
- AG: Green anodised aluminium
- AS: Black anodised aluminium
- V2: Stainless steel

Head Style

- F: Flat
- G: Finger guided

EP15 / / / M / S / L1