



# CM130 19mm Vandalproof Pushbutton



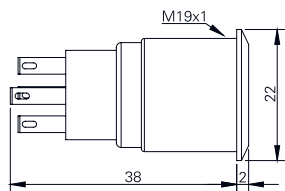
## Specification

Termination	2.8×0.5mm fast connect terminals
Switching function	Momentary or maintained
Configuration of poles	Single or double
Maximum load	5A, 48VAC
LED voltage	See ordering information
Contact resistance	< 50mΩ
Insulation resistance	> 1000MΩ
Operating temperature	-20°C to +55°C
Ingress protection	IP67 (EN 60529)
Duty cycle	50,000 (min)
Operating force	3N
Nut mounting torque	~ 0.8Nm
Panel thickness	1.0mm to 10.0mm
Body & button material	See ordering information
Contact material	Silver Alloy

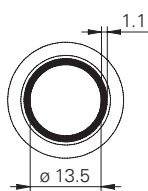
## Product Dimensions

All dimensions in mm

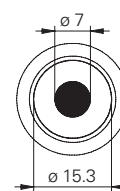
### Screw Terminals Flat



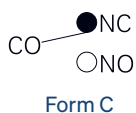
### Front View (ring)



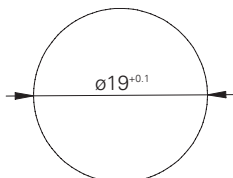
### Front View (dot)



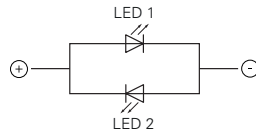
## Circuit Diagram



## Mounting Dimensions

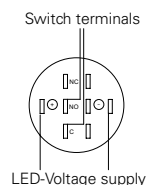


## LED Circuit Diagram

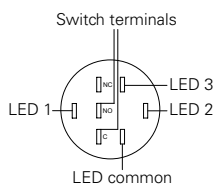


## Wiring Instructions

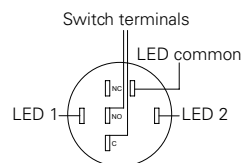
### 2 LED pins



### 4 LED pins (RGB)<sup>5</sup>



### 3 LED pins (bi-colour)<sup>4</sup>



## Ordering Information



### Material

V2: Stainless steel<sup>1</sup>  
AS: Black aluminium

### LED

R: Ring  
D: Dot  
P: Power  
S: Powering  
X: Custom<sup>2</sup>

### LED Colour

GN: Green  
RD: Red  
YL: Yellow  
BL: Blue  
WH: White  
GR: Green/red<sup>3</sup>  
BR: Blue/red<sup>3</sup>  
GB: Green/blue<sup>3</sup>  
01: Green/red<sup>4,7</sup>  
02: Green/blue<sup>4,7</sup>  
03: Blue/red<sup>4,7</sup>  
11: RGB<sup>5,7</sup>

### LED Voltage

00: No resistor<sup>6</sup>  
06: 6 volt  
12: 12 volt  
24: 24 volt

### Switch Function

M: Momentary  
L: Maintained

### Poles

S: Single  
D: Double

CM130 /  / F /  /  /  /  / 28

<sup>1</sup> 14301

<sup>2</sup> IP65 (EN60529)

<sup>3</sup> 2 pins, colour change by swapping polarity

<sup>4</sup> 3 pins for LED connection (one per colour and common cathode (common anode available on request))

<sup>5</sup> Red/green/blue, 4 pins for LED connection (one per colour and common cathode (common anode available on request))

<sup>6</sup> Red, yellow: 1.8V | Green, blue, white: 2.8V (15mA)

<sup>7</sup> Only available with single pole