



# CM50 30mm Vandalproof Pushbutton

30mm	35mm	35mm	40.8mm	IP65
		38.4mm	40.9mm	IP67

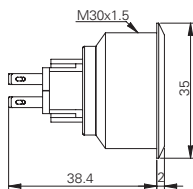
## Specification

Termination	Screw or 2.8×0.5mm fast connect terminals
Switching function	Momentary or maintained
Configuration of poles	Single or double
Maximum load	5A, 48VAC
LED voltage	-
Contact resistance	< 50mΩ
Insulation resistance	> 1000MΩ
Operating temperature	-20°C to +55°C
Ingress protection	IP67 (EN 60529) maintained: IP65
Duty cycle	50,000 (min)
Operating force	5.5N
Nut mounting torque	~ 0.8Nm
Panel thickness	1.0mm to 10.0mm
Body & button material	See ordering information
Contact material	Gold plated

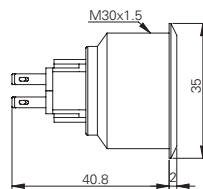
## Product Dimensions

All dimensions in mm

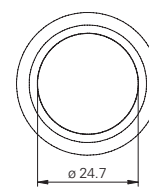
### 2.8mm Terminals Momentary



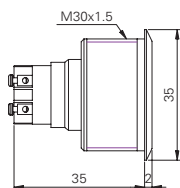
### 2.8mm Terminals Maintained



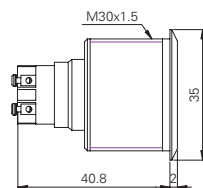
### Front View



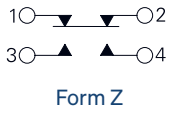
### Screw Terminals Momentary



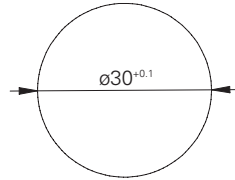
### Screw Terminals Maintained



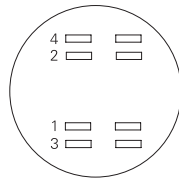
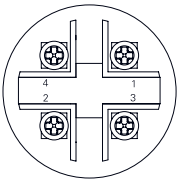
### Circuit Diagram



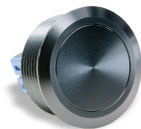
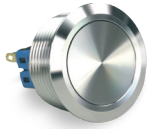
### Mounting Dimensions



### Contact Arrangement



### Ordering Information



#### Material

V2: Stainless steel<sup>1</sup>  
AS: Black aluminium

#### Switch Function

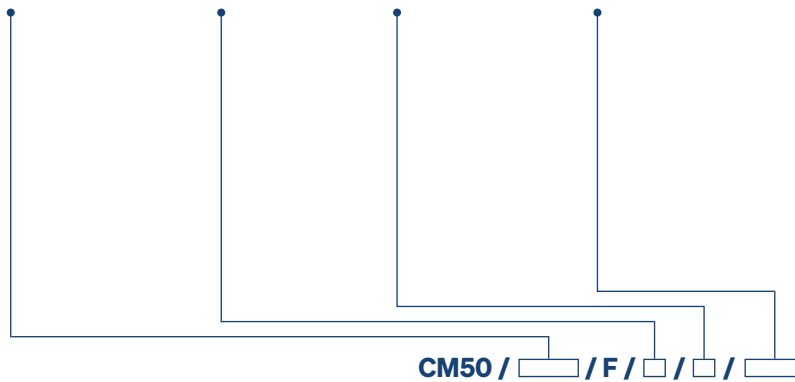
M: Momentary  
L: Maintained<sup>2</sup>

#### Poles

S: Single  
D: Double

#### Termination

28: 2.8mm tabs  
ST: Screws<sup>3</sup>



<sup>1</sup> 1.4301

<sup>2</sup> IP65 (EN60529)

<sup>3</sup> Only available with single pole

Non rotating button available on request