



CM50 30mm Vandalproof Pushbutton

| | | | | |
|------|------|--------|--------|------|
| 30mm | 35mm | 35mm | 40.8mm | IP65 |
| | | 38.4mm | 40.9mm | IP67 |

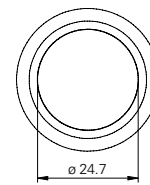
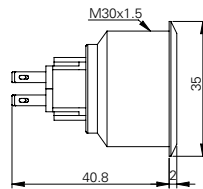
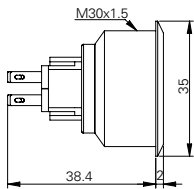
Specification

| | |
|------------------------|---|
| Termination | Screw or 2.8×0.5mm fast connect terminals |
| Switching function | Momentary or maintained |
| Configuration of poles | Single or double |
| Maximum load | 5A, 48VAC |
| LED voltage | - |
| Contact resistance | < 50mΩ |
| Insulation resistance | > 100MΩ |
| Operating temperature | -25°C to +55°C |
| Ingress protection | IP67 (EN 60529) maintained: IP65 |
| Duty cycle | 50,000 (min) |
| Operating force | Single pole: 4N, double pole: 7.5N |
| Nut mounting torque | ~ 0.6Nm |
| Panel thickness | 1.0mm to 10.0mm |
| Body & button material | See ordering information |
| Contact material | Gold plated |

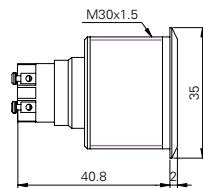
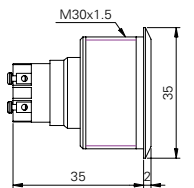
Product Dimensions

All dimensions in mm

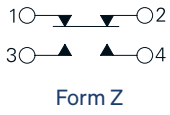
2.8mm Terminals Momentary 2.8mm Terminals Maintained Front View



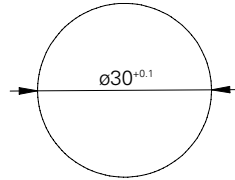
Screw Terminals Momentary Screw Terminals Maintained



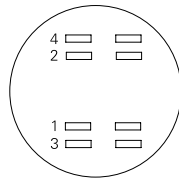
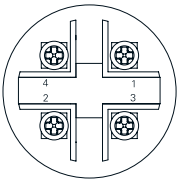
Circuit Diagram



Mounting Dimensions



Contact Arrangement



Ordering Information



Material

V2: Stainless steel¹
AS: Black aluminium

Switch Function

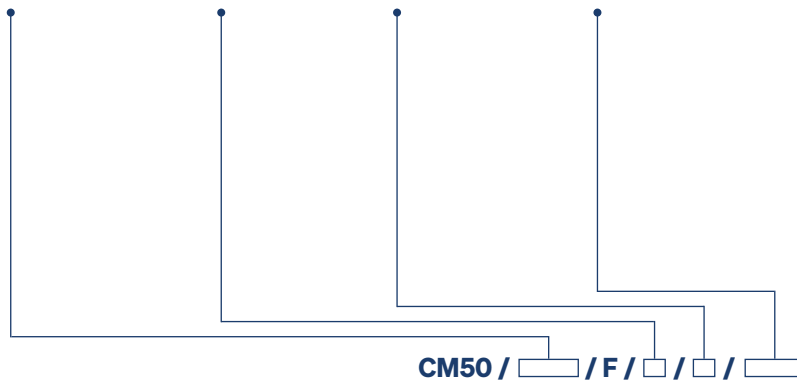
M: Momentary
L: Maintained²

Poles

S: Single
D: Double

Termination

28: 2.8mm tabs
ST: Screws³



¹ 1.4301

² IP65 (EN60529)

³ Only available with single pole

Non rotating button available on request