



CMI57 16mm Vandalproof Pushbutton

16mm	18.5mm	21mm	IP67
		25.6mm	

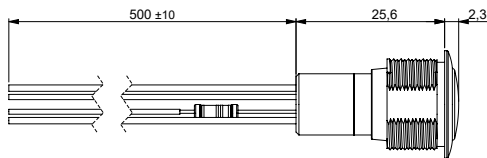
Specification

Termination	50cm flying leads, PC pins or 2.0×0.5mm solder terminals
Switching function	Momentary or maintained
Configuration of poles	Single
Maximum load	250mA, 48VDC
LED voltage	See ordering information
Contact resistance	< 50mΩ
Insulation resistance	> 1000MΩ
Operating temperature	-25°C to +85°C
Ingress protection	IP67
Duty cycle	50,000 (min)
Operating force	3N
Nut mounting torque	~ 1.0Nm
Panel thickness	0.5mm to 6.0mm
Body & button material	See ordering information
Contact material	Gold

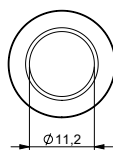
Product Dimensions

All dimensions in mm

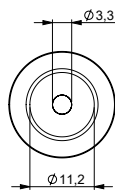
Flying Leads



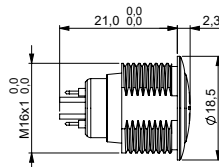
Front View (ring)



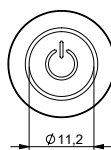
Front View (dot)



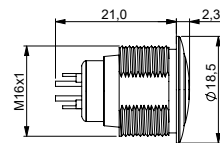
2.8mm Terminals



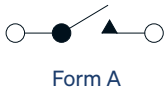
Front View (power)



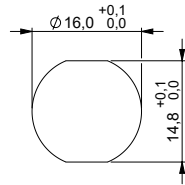
PC pins



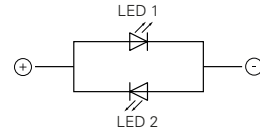
Circuit Diagram



Mounting Dimensions

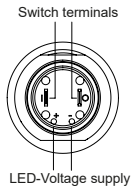


LED Circuit Diagram

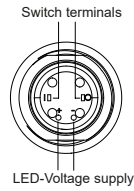


Wiring Instructions

Solder terminals | 2 LED pins



PC terminals | 2 LED pins



Ordering Information



Material

V2: Stainless steel¹
 ZA: Zinc Alloy, Velour Chrome Plated
 ZK: Zinc Alloy, Black

LED

R: Ring
 D: Dot
 S: Powering

LED Colour

GN: Green
 RD: Red
 YL: Yellow
 BL: Blue
 WH: White²
 OR: Orange
 63: Blue/red
 60: Green/red

LED Voltage

00: No resistor³
 05: 5 volt
 12: 12 volt
 24: 24 volt

Switch Function

M: Momentary
 L: Maintained

Terminations

20: 2.0mm solder tabs
 L4: 50cm leads
 PC: PC pins

CMI57 / [Material] / [LED] / [LED Colour] / [LED Voltage] / [Switch Function] / [Terminations]

¹ 14301

² Only with 5V resistor

³ Red, yellow: 1.8V | Green, blue, white: 2.8V (15mA)