



CM36 22mm Vandalproof Pushbutton

22mm	25mm	35.3mm	IP65
		40.3mm	IP67

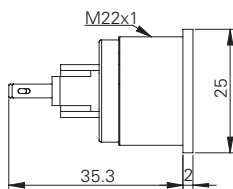
Specification

Termination	2.8×0.5mm fast connect terminals
Switching function	Momentary or maintained
Configuration of poles	Single
Maximum load	5A, 48VAC
LED voltage	-
Contact resistance	< 50mΩ
Insulation resistance	> 1000MΩ
Operating temperature	-20°C to +55°C
Ingress protection	IP67 (EN 60529) maintained: IP65
Duty cycle	50,000 (min)
Operating force	5.5N
Nut mounting torque	~ 0.8Nm
Panel thickness	1.0mm to 8.0mm
Body & button material	See ordering information
Contact material	Silver Alloy

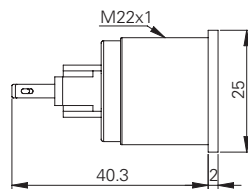
Product Dimensions

All dimensions in mm

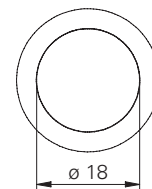
Momentary



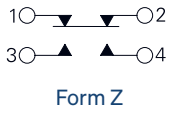
Maintained



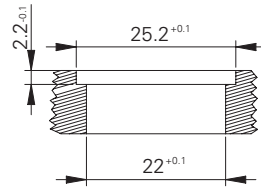
Front View (all versions)



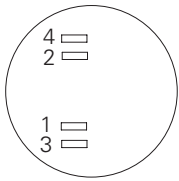
Circuit Diagram



Mounting Dimensions



Contact Arrangement



Ordering Information

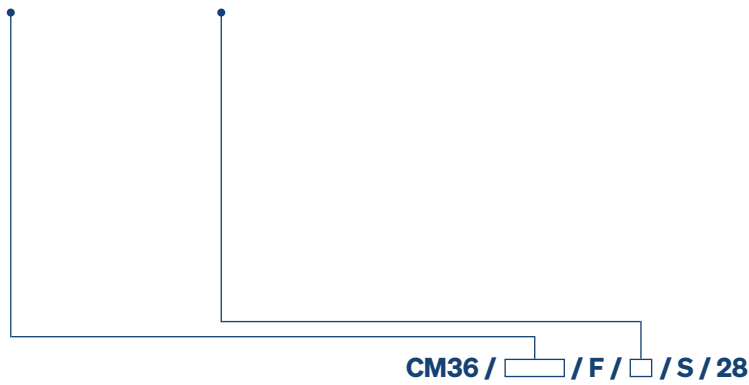


Material

V2: Stainless steel¹
AS: Black aluminium

Switch Function

M: Momentary
L: Maintained²



¹ 1.4301

² IP65 (EN60529)

Non rotating button available on request