



CM40 25mm Vandalproof Pushbutton

25mm	28mm	34.8mm	40.8mm	IP65
		38.5mm	41mm	IP67

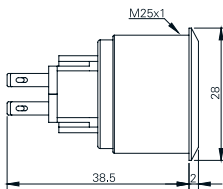
Specification

Termination	Screw or 2.8×0.5mm fast connect terminals
Switching function	Momentary or maintained
Configuration of poles	Single or double
Maximum load	5A, 48VAC
LED voltage	-
Contact resistance	< 50mΩ
Insulation resistance	> 100MΩ
Operating temperature	-25°C to +55°C
Ingress protection	IP67 (EN 60529) maintained: IP65
Duty cycle	50,000 (min)
Operating force	Single pole: 4N, double pole: 7.5N
Nut mounting torque	~ 0.6Nm
Panel thickness	1.0mm to 10.0mm
Body & button material	See ordering information
Contact material	Gold plated

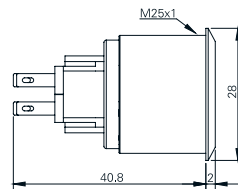
Product Dimensions

All dimensions in mm

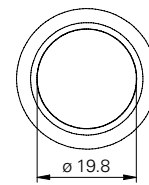
2.8mm Terminals Momentary



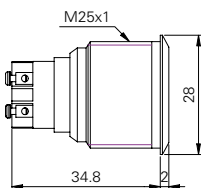
2.8mm Terminals Maintained



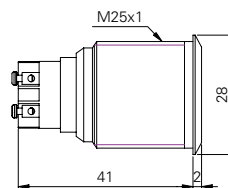
Front View (all versions)



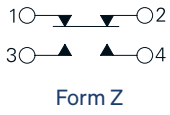
Screw Terminals Momentary



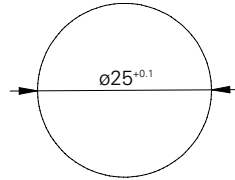
Screw Terminals Maintained



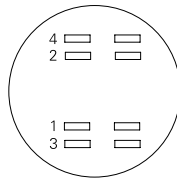
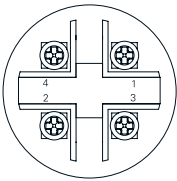
Circuit Diagram



Mounting Dimensions



Contact Arrangement



Ordering Information



Material

V2: Stainless steel¹
AS: Black aluminium

Switch Function

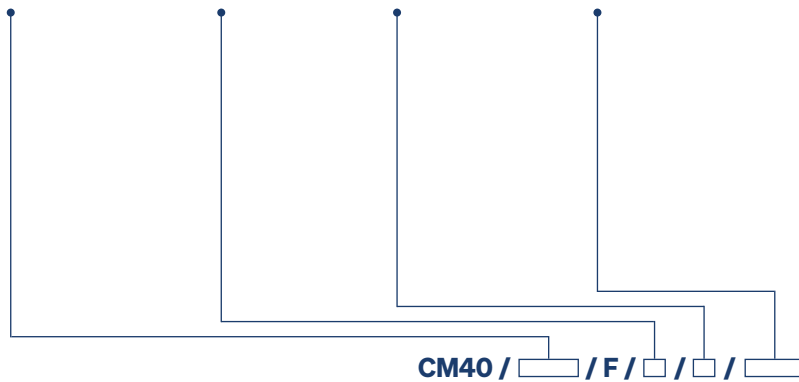
M: Momentary
L: Maintained²

Poles

S: Single
D: Double

Termination

28: 2.8mm tabs
ST: Screws³



¹ 1.4301

² IP65 (EN60529)

³ Only available with single pole

Non rotating button available on request