



CMIO8 12mm Vandalproof Pushbutton

12mm	14mm	19.1mm	IP67	LED	
------	------	--------	------	-----	--

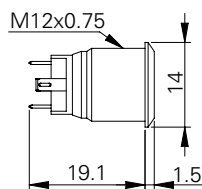
Specification

Termination	2.0x0.5mm solder terminals
Switching function	Momentary
Configuration of poles	Single
Maximum load	2A, 36VDC
LED voltage	See ordering information
Contact resistance	< 50mΩ
Insulation resistance	> 100MΩ
Operating temperature	-25°C to +55°C
Ingress protection	IP67 (EN 60529)
Duty cycle	200,000 (min)
Operating force	1.5N
Nut mounting torque	~ 0.3Nm
Panel thickness	1.0mm to 7.0mm
Body & button material	See ordering information
Contact material	Silver plated brass

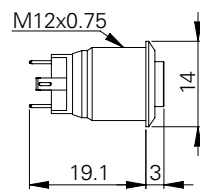
Product Dimensions

All dimensions in mm

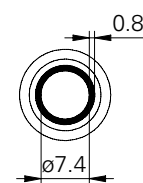
Flat



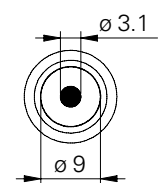
Raised



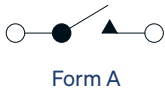
Front View (ring)



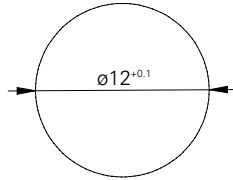
Front View (dot)



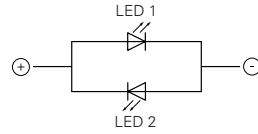
Circuit Diagram



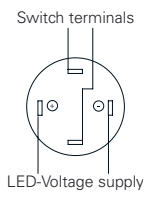
Mounting Dimensions



LED Circuit Diagram



Wiring Instructions



Ordering Information



Material

V2: Stainless steel¹
AS: Black aluminium

Button

F: Flat
R: Raised

LED

R: Ring
D: Dot
P: Power²

LED Colour

GN: Green
RD: Red
YL: Yellow
BL: Blue
WH: White
OR: Orange
GR: Green/red^{3,4}
BR: Blue/red^{3,4}
GB: Green/blue^{3,4}

LED Voltage¹

00: No resistor⁵
06: 6 volt
12: 12 volt
24: 24 volt

CM108 / [] / [] / [] / [] / [] / M / S / 20

¹ 14301

² Only available with flat button

³ Only available without resistor

⁴ 2 pins, colour change by swapping polarity

⁵ Red, yellow, orange: 1.8V | Green, blue, white: 2.8V (15mA)