



CMI45 28mm Vandalproof Pushbutton

| | | | | | |
|------|------|--------|--------|------|-----|
| 28mm | 32mm | 35mm | 40.8mm | IP65 | LED |
| | | 38.4mm | 40.9mm | IP67 | |

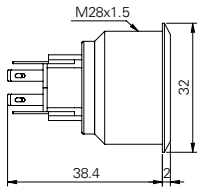
Specification

| | |
|------------------------|------------------------------------|
| Termination | 2.8×0.5mm fast connect terminals |
| Switching function | Momentary or maintained |
| Configuration of poles | Single or double |
| Maximum load | 5A, 48VAC |
| LED voltage | See ordering information |
| Contact resistance | < 50mΩ |
| Insulation resistance | > 100MΩ |
| Operating temperature | -25°C to +55°C |
| Ingress protection | IP67 (EN 60529) maintained: IP65 |
| Duty cycle | 50,000 (min) |
| Operating force | Single pole: 4N, double pole: 7.5N |
| Nut mounting torque | ~ 0.6Nm |
| Panel thickness | 1.0mm to 10.0mm |
| Body & button material | See ordering information |
| Contact material | Gold plated |

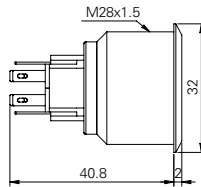
Product Dimensions

All dimensions in mm

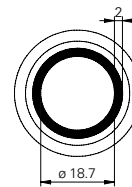
2.8mm Terminals Momentary



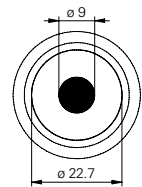
2.8mm Terminals Maintained



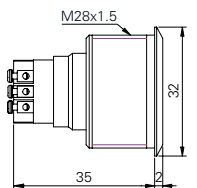
Front View (ring)



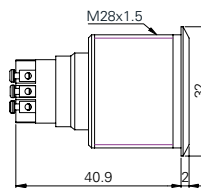
Front View (dot)



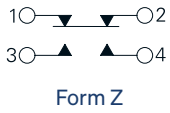
Screw Terminals Momentary



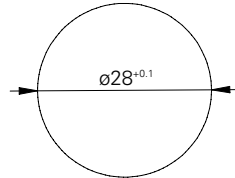
Screw Terminals Maintained



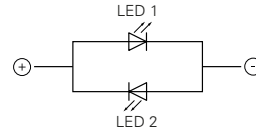
Circuit Diagram



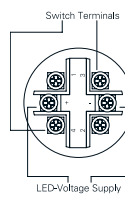
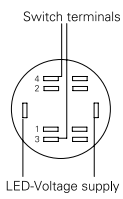
Mounting Dimensions



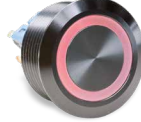
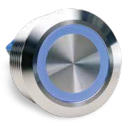
LED Circuit Diagram



Wiring Instructions



Ordering Information



| Material | LED | LED Colour | LED Voltage | Switch Function | Poles |
|---|-------------------|---|--|--|------------------------|
| V2: Stainless steel ¹ AS: Black aluminium | R: Ring D: Dot | GN: Green RD: Red YL: Yellow BL: Blue WH: White GR: Green/red ³ BR: Blue/red ³ GB: Green/blue ³ | 00: No resistor ⁴ 06: 6 volt 12: 12 volt 24: 24 volt | M: Momentary L: Maintained ² | S: Single D: Double |

CMI45 / [] / F / [] / [] / [] / [] / 28

¹ 14301
² IP65 (EN60529)
³ 2 pins, colour change by swapping polarity
⁴ Red, yellow: 1.8V | Green, blue, white: 2.8V (15mA)

Non rotating button available on request