

# CM11 16mm Vandalproof Pushbutton

16mm	18mm	20.1mm	IP65
------	------	--------	------

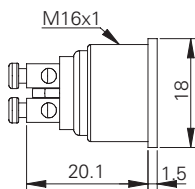
## Specification

Termination	Screw or 2.0×0.5mm solder terminals
Switching function	Momentary
Configuration of poles	Single
Maximum load	2A, 36VDC
LED voltage	-
Contact resistance	< 50mΩ
Insulation resistance	> 1000MΩ
Operating temperature	-20°C to +55°C
Ingress protection	IP65 (EN 60529)
Duty cycle	200,000 (min)
Operating force	4N
Nut mounting torque	~ 0.6Nm
Panel thickness	1.0mm to 6.0mm
Body & button material	See ordering information
Contact material	Silver plated brass

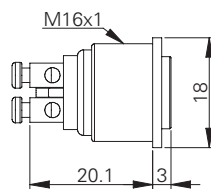
## Product Dimensions

All dimensions in mm

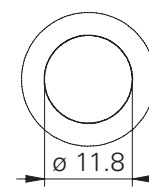
### Flat Screw



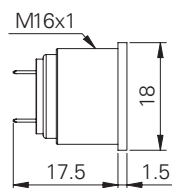
### Raised Screw



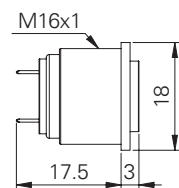
### Front View (all versions)



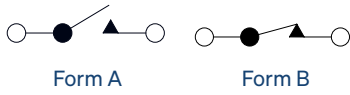
### Flat 2.0mm



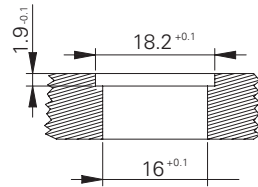
### Raised 2.0mm



### Circuit Diagram



### Mounting Dimensions



### Ordering Information



#### Material

V2: Stainless steel<sup>1</sup>  
 AS: Black aluminium  
 BN: Nickel plated brass  
 GB: Gold plated brass

#### Button

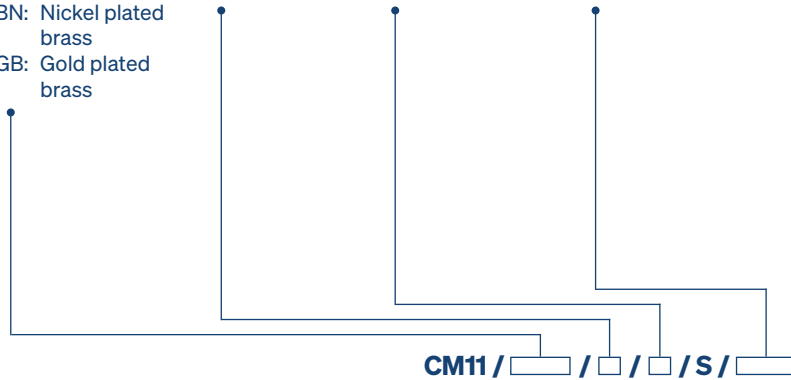
F: Flat  
 R: Raised

#### Switch Function

M: Momentary NO  
 N: Maintained NC

#### Termination

20: 2.0mm tabs  
 ST: Screws



<sup>1</sup> 14301