



CM23 19mm Vandalproof Pushbutton

19mm	22mm	17.2mm	IP65
		19.1mm	

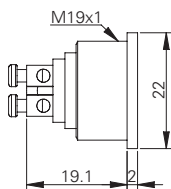
Specification

Termination	Screw or 2.0×0.5mm solder terminals
Switching function	Momentary
Configuration of poles	Single
Maximum load	2A, 36VAC
LED voltage	-
Contact resistance	< 50mΩ
Insulation resistance	> 1000MΩ
Operating temperature	-20°C to +55°C
Ingress protection	IP65 (EN 60529)
Duty cycle	200,000 (min)
Operating force	4N
Nut mounting torque	~ 0.8Nm
Panel thickness	1.0mm to 6.0mm
Body & button material	See ordering information
Contact material	Silver plated brass

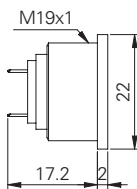
Product Dimensions

All dimensions in mm

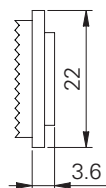
Screw Terminals Flat



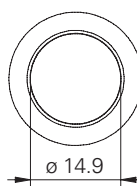
2.0mm Terminals Flat



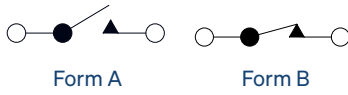
Raised



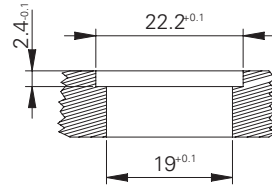
Front View (all versions)



Circuit Diagram



Mounting Dimensions



Ordering Information



Material

V2: Stainless steel¹
AS: Black aluminium

Button

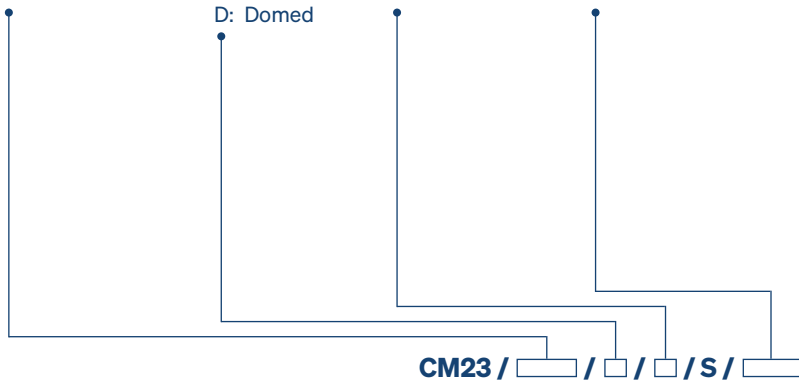
F: Flat
R: Raised
D: Domed

Switch Function

M: Momentary NO
N: Momentary NC

Terminations

20: 2.0mm tabs
ST: Screws



¹ 14301