

CRI22 22mm Contactless Sensor Switch Illuminated



22mm



25mm



60mm

IP65

LED

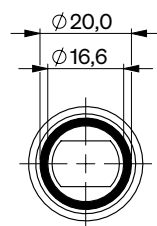
Specification

Termination	12cm flying leads
Switching function	Momentary
Configuration of poles	Single
Reaction distance	~ 2cm to 15cm
Maximum load	0.3A, 24VDC
LED voltage	See ordering information
Insulation resistance	> 100MΩ
Operating temperature	-15°C to +55°C
Ingress protection	IP65
Duty cycle	1.000.000 (min)
Nut mounting torque	~ 0.6Nm
Body & button material	Head: PMMA, Body: Stainless Steel
Terminal type	Sheltered cable

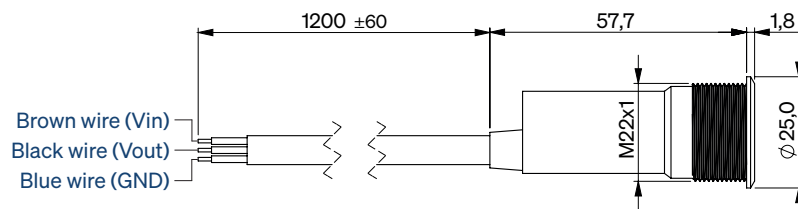
Product Dimensions

All dimensions in mm

Front View

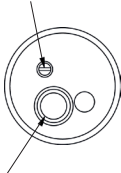


Side View



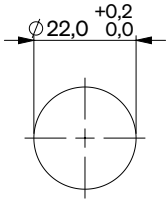
Rear View

Induction distance adjuster

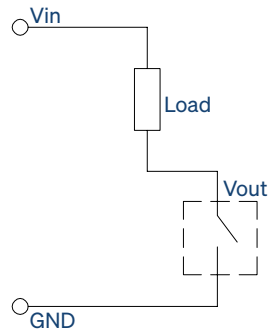


Three-core sheathed cable,
approx. 1m length

Mounting Dimensions



Wiring Instructions



Ordering Information

LED Colour¹

RD: Red
GN: Green
RG: Red/Green
GR: Green/Red

LED Voltage

06: 6 volt
12: 12 volt
24: 24 volt

CRI22 / V2 / F / R / / / M / S / L1

¹ Other colours can be customized