



CM28 19mm Vandalproof Pushbutton

19mm	22mm	12.7mm	IP67
------	------	--------	------

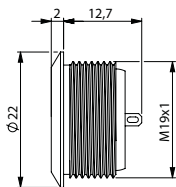
Specification

Termination	2.0×0.5mm solder terminals
Switching function	Momentary
Configuration of poles	Single
Maximum load	50mA, 24VDC
LED voltage	-
Contact resistance	< 50mΩ
Insulation resistance	> 1000MΩ
Operating temperature	-25°C to +55°C
Ingress protection	IP67 (EN 60529)
Duty cycle	50,000 (min)
Operating force	4N
Nut mounting torque	5-14Nm
Panel thickness	1.0mm to 3.0mm
Body & button material	See ordering information
Contact material	Gold plated brass

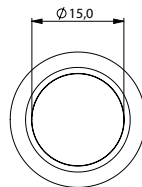
Product Dimensions

All dimensions in mm

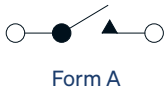
Flat



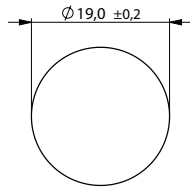
Front View (all versions)



Circuit Diagram



Mounting Dimensions



Ordering Information



Material

V2: Stainless steel¹
AS: Black aluminium

CM28 / / F / M / S / 20

¹ 14301