



CMI46 28mm Vandalproof Pushbutton

28mm	32mm	38.4mm	IP65	LED
		40.8mm	IP67	

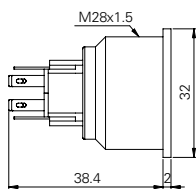
Specification

Termination	2.8×0.5mm fast connect terminals
Switching function	Momentary or maintained
Configuration of poles	Single or double
Maximum load	5A, 48VAC
LED voltage	See ordering information
Contact resistance	< 50mΩ
Insulation resistance	> 100MΩ
Operating temperature	-25°C to +55°C
Ingress protection	IP67 (EN 60529) maintained: IP65
Duty cycle	50,000 (min)
Operating force	Single pole: 4N, double pole: 7.5N
Nut mounting torque	~ 0.6Nm
Panel thickness	1.0mm to 10.0mm
Body & button material	See ordering information
Contact material	Gold plated

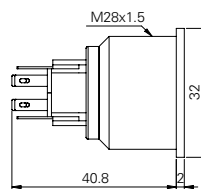
Product Dimensions

All dimensions in mm

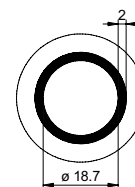
Momentary



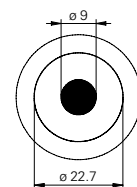
Maintained



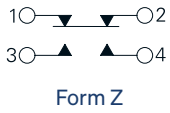
Front View (ring)



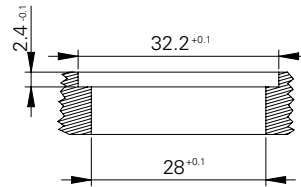
Front View (dot)



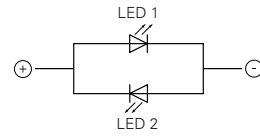
Circuit Diagram



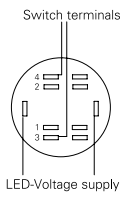
Mounting Dimensions



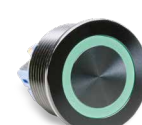
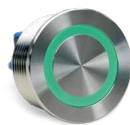
LED Circuit Diagram



Wiring Instructions



Ordering Information



Material	LED	LED Colour	LED Voltage	Switch Function	Poles
V2: Stainless steel ¹ AS: Black aluminium	R: Ring D: Dot	GN: Green RD: Red YL: Yellow BL: Blue WH: White GR: Green/red ³ BR: Blue/red ³ GB: Green/blue ³	00: No resistor ⁴ 06: 6 volt 12: 12 volt 24: 24 volt	M: Momentary L: Maintained ²	S: Single D: Double

CMI46 / [] / F / [] / [] / [] / [] / 28

¹ 14301
² IP65 (EN60529)
³ 2 pins, colour change by swapping polarity
⁴ Red, yellow: 1.8V | Green, blue, white: 2.8V (15mA)