



# CKI21 19mm Illuminated Capacitive Switch

 19mm	 22mm	 32mm	IP68	LED
			IP69K	

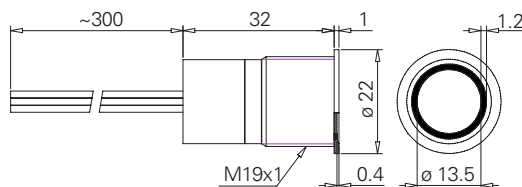
## Specification

Termination	30cm flying leads
Switching function	Momentary or maintained
Configuration of poles	Single
Maximum load	500mA, 24VDC
LED voltage	See ordering information
Contact resistance	200mΩ
Insulation resistance	600VDC 10MΩ
Operating temperature	-40°C to +85°C
Ingress protection	IP68 (EN 60529), IP69K (DIN 4050)
Duty cycle	50,000,000 (min)
Operating force	ON
Nut mounting torque	~ 0.8Nm
Panel thickness	0.5mm to 8.0mm
Body & button material	Stainless steel 1.4301
Can be triggered by water	

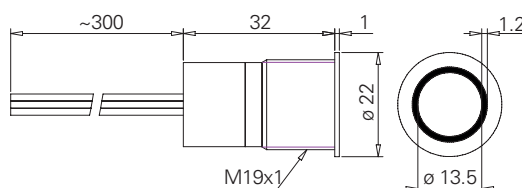
## Product Dimensions

All dimensions in mm

### Finger Guided

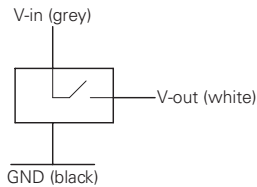


### Flat

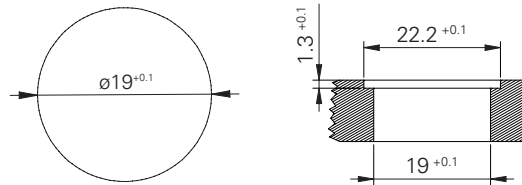


## Circuit Diagram

Common plus (PMOS)



## Mounting Dimensions



## Wiring Instructions

Switch: See circuit diagram

— LED wire +<sup>2</sup>

— LED wire -<sup>2</sup>

For versions with 3 & 4 LED wires there is one wire per colour (+) and a black wire as common cathode<sup>4,5</sup>

## Ordering Information



### Head Style

F: Flat  
G: Finger guided

### LED Colour

GN: Green  
RD: Red  
YL: Yellow  
BL: Blue  
WH: White  
BG: Blue/green<sup>3</sup>  
BR: Blue/red<sup>3</sup>  
BW: Blue/white<sup>3</sup>  
RG: Red/green<sup>3</sup>  
RB: Red/blue<sup>3</sup>  
GB: Green/blue<sup>3</sup>  
GR: Green/red<sup>3</sup>  
WB: White/blue<sup>3</sup>  
NB: Off/blue  
NG: Off/green  
NR: Off/red  
NW: Off/white  
NY: Off/yellow  
O1: Green/red<sup>4</sup>  
O2: Green/blue<sup>4</sup>  
O3: Blue/red<sup>4</sup>  
O4: Blue/white<sup>4</sup>  
11: RGB<sup>5</sup>

### LED Voltage

00: No resistor<sup>1</sup>  
05: 5 volt  
12: 12 volt  
24: 24 volt

### Switch Function

M: Momentary  
L: Maintained  
1: Momentary switched LED<sup>3</sup>  
2: Maintained switched LED<sup>3</sup>

CKI21 / V2 /  / R /  /  /  / S / L3

<sup>1</sup> Green, yellow: 1.8V | Red, blue, white: 2.8V (20mA)

<sup>2</sup> LED wires are only present by unswitched LED versions

<sup>3</sup> First colour is active when the switch is not pressed.

Second colour is active when switch is pressed.

<sup>4</sup> 3 wires for LED connection (one per colour and common cathode (common anode available on request))

<sup>5</sup> Red/green/blue, 4 wires for LED connection (one per colour and common cathode (common anode available on request))