



CMI58 22mm Vandalproof Pushbutton

22mm	25mm	23.5mm	IP67
------	------	--------	------

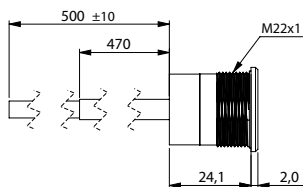
Specification

Termination	50cm flying leads
Switching function	Momentary or maintained
Configuration of poles	Single
Maximum load	10mA, 12VDC
LED voltage	See ordering information
Contact resistance	< 50mΩ
Insulation resistance	> 1000MΩ
Operating temperature	-25°C to +85°C
Ingress protection	IP67 (EN 60529)
Duty cycle	20,000 (min)
Operating force	3N
Nut mounting torque	1.2Nm
Panel thickness	1.3mm to 3.8mm
Body & button material	See ordering information
Contact material	See ordering information

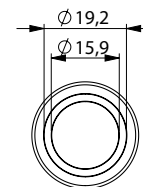
Product Dimensions

All dimensions in mm

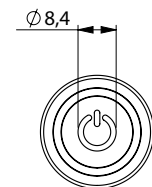
Flying Leads



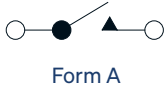
Front View (ring)



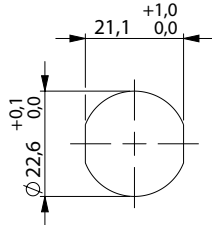
Front View (power)



Circuit Diagram



Mounting Dimensions



Wiring Instructions

- Switch wire
- Switch wire
- LED colour 1 wire for +LED
- LED colour 1 wire for -LED

if the switch has two LED colours, additionally:

- LED colour 2 wire for +LED
- LED colour 2 wire for -LED

Ordering Information



Material

V2: Stainless steel¹
 AN: Silver aluminium

LED

R: Ring
 P: Power

LED Colour

GN: Green
 RD: Red
 BL: Blue
 WH: White
 63: Blue/red
 60: Green/red
 62: Blue/green

LED Voltage

05: 5 volt
 12: 12 volt
 24: 24 volt

Switch Function

M: Momentary
 L: Maintained

CMI58 / / F / / / / S / L4

¹ 14301