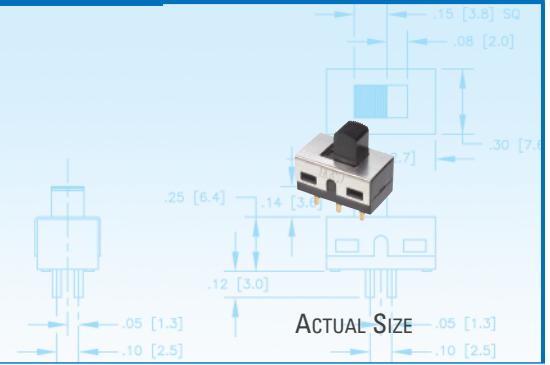
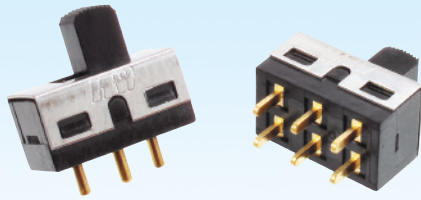


## SERIES 023



### Mini Mike™ Miniature Slide Switches

This rugged, long life miniature slide switch is ideal for applications where exceptional quality and reliability are needed. Available in SPDT and DPDT configurations, these gold contact slide switches come with PC terminals.

#### KEY FEATURES:

- SPDT and DPDT circuits
- Gold Contacts
- PC terminals
- Some versions UL recognized
- Temperature range: -40°C to +100°C

#### APPLICATIONS

- Medical controls
- Test equipment
- Datacom
- Precision instrumentation

#### ORDERING INFORMATION:

Part Number	Circuit	Button Height	Terminal Configuration	Rating
<b>023-021-105</b>	SPDT	0.20	2	250 mA @ 30 VDC
<b>023-021-114</b>	DPDT	0.20	3	100 mA @ 125 VDC
<b>023-021-304 *</b>	SPDT (Form Z)	0.14	4	500 mA @ 30 VDC

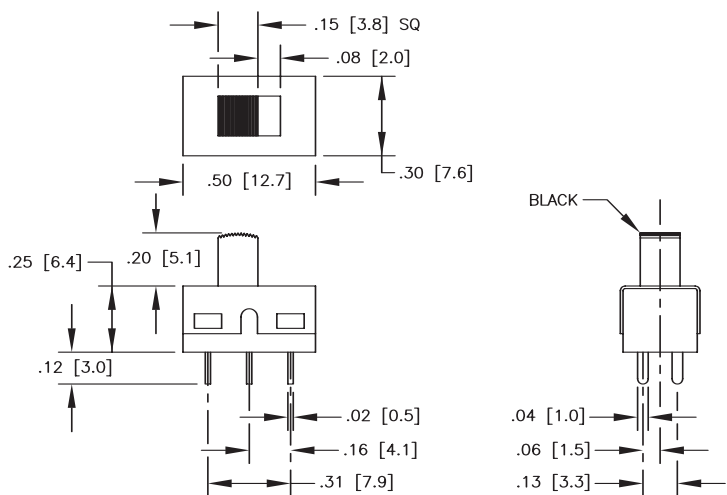
\* UL recognized 0.5 A @ 125 VAC, 75 VDC

#### STANDARDS / AGENCY / RATINGS:

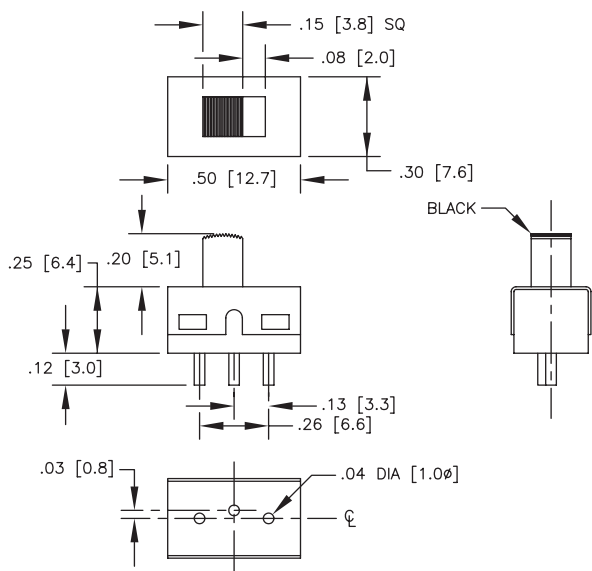


## SERIES 23—MINI MIKE™ MINIATURE SLIDE

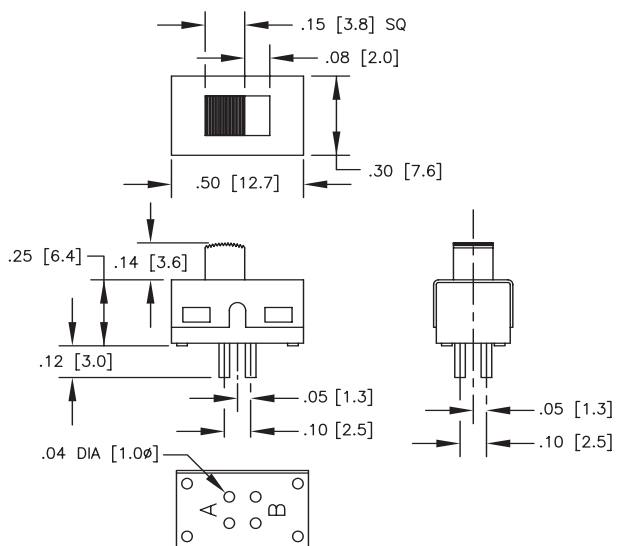
### 023-021-114



### 023-021-105



### 023-021-304



## MECHANICAL / ELECTRICAL CHARACTERISTICS:

### Circuit:

SPDT (023-021-105)  
DPDT (023-021-114)  
SPDT-DB (023-021-304)

### Operating force:

200-500 grams  
(023-021-114)  
100-500 grams  
(023-021-105 & 304)

### Electrical rating:

100 milliamps 125 VDC  
(023-021-114)  
250 milliamps 30 VDC  
(023-021-105)  
0.5 amp 125 VAC  
(023-021-304)

### Contact resistance:

20 milliohms max initially

### Temperature rating:

-40°F to 212°F  
(-40°C to 100°C)

### Life:

100,000 actuations

### Contact material:

hard gold over barrier

# ITW Switches

Engelking Elektronik GmbH  
Albstrasse 16  
D-78609 Tuningen  
Tel: +49 (0) 7464 9865 0  
Fax: +49 (0) 7464 9865 71

sales@itw-switches.de  
www.itw-switches.de